

Fact sheet

Atherton



House size

Dimensions	14.43 x 17.57 m
Living area basement	197 m ²
Living area ground floor	218 m ²
Living area first floor	164 m ²
Living area second floor	93 m ²
Total living area	672 m ²

Façade

Mineral rendered façade

Roof

Hipped roof

Heating and ventilation

- Gas boiler
- Solar panels, photovoltaic panels
- Underfloor heating
- Mechanical Ventilation with Heat Recovery

Architecture and special features

- Architecture inspired by classical mansions and Revivalist designs of the previous century
- Classic features include front door porch with pitched roof, white stone pillars, large windows, central pitched roof with oxe-eye façade window
- Generous garden veranda

Standard specification

- Triple-glazed timber and aluminium windows, fitted in the factory without PU foam
- Holistic health concept with outstanding indoor air quality
- Effective Xund-E electrosmog protection and shielded electrical installations
- Superior-quality, environmentally friendly interiors that are healthy to live in thanks to innovative solutions developed in-house by Baufritz (e.g. interior paints, floor adhesives, etc.)
- HOIZ natural, organic insulation made from wood shavings — developed in-house, certified by natureplus and IBN



BAUFRITZ[®]
WIR BAUEN GESUNDHEIT

Floor plans Atherton

Ground Floor

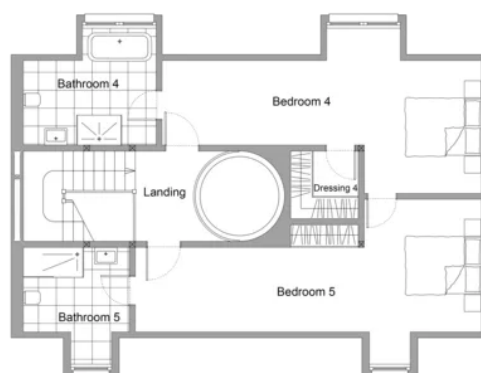


First Floor

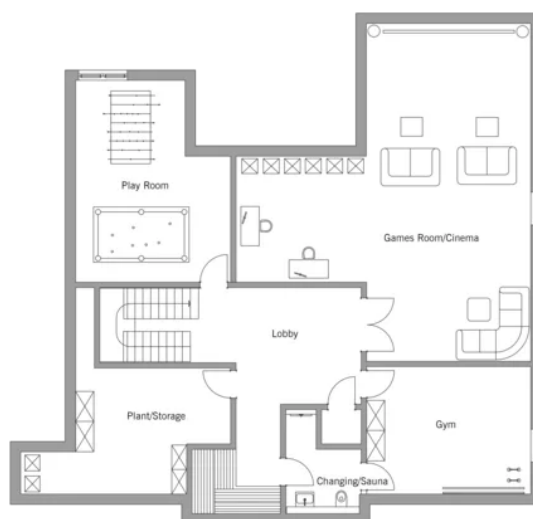


BAUFRITZ[®]
WIR BAUEN GESUNDHEIT

Attic



Basement



BAUFRITZ[®]
WIR BAUEN GESUNDHEIT

Baufritz (UK) Limited

Camboro Business Park · The Workplace · Oakington Road, Girton · Cambridge CB3 0QH
Telephone +44 (0) 1223 235632 · E-Mail: enquiries@baufritz.co.uk · Web: www.baufritz.co.uk