

Fact sheet

Barn L



House size

Dimensions	29.45 x 19.45 m
Living area ground floor	270 m ²
Living area first floor	71 m ²
Total living area	341 m ²

Façade

Timber

Roof

Pitched roof

Architecture and special features

- Single-storey L-shaped family home in a barn-style design
- Four bedrooms, two en-suite and two with a shared bathroom
- Choice of natural stone and timber cladding
- Wide choice of interior furnishings
- Skylight with fixed glazing and solar shades
- Buildings services with A+ rating and the option of solar panels

Standard specification

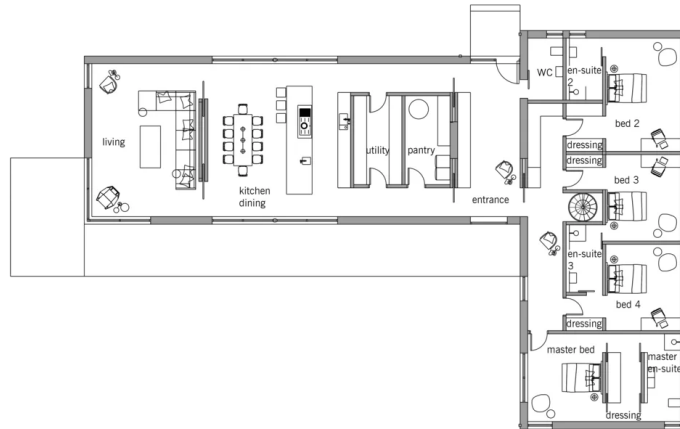
- Triple-glazed timber and aluminium windows, fitted in the factory without PU foam
- Holistic health concept with outstanding indoor air quality
- Effective Xund-E electrosmog protection and shielded electrical installations
- Superior-quality, environmentally friendly interiors that are healthy to live in thanks to innovative solutions developed in-house by Baufritz (e.g. interior paints, floor adhesives, etc.)
- HOIZ natural, organic insulation made from wood shavings — developed in-house, certified by natureplus and IBN



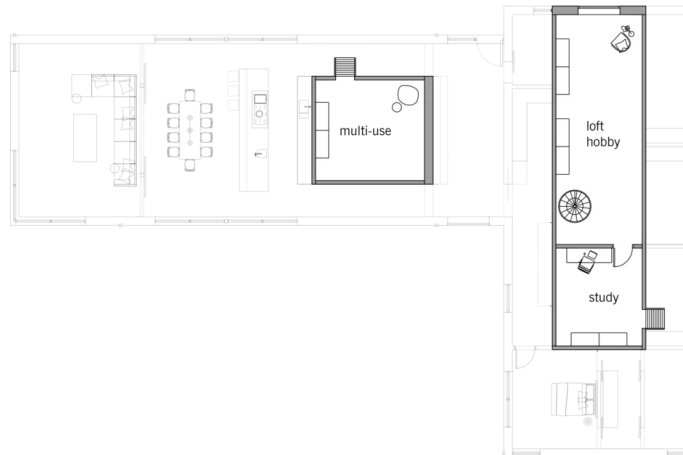
BAUFRITZ[®]
WIR BAUEN GESUNDHEIT

Floor plans Barn L

Ground Floor



First Floor



BAUFRITZ
WIR BAUEN GESUNDHEIT

Baufritz (UK) Limited

Camboro Business Park · The Workplace · Oakington Road, Girton · Cambridge CB3 0QH
Telephone +44 (0) 1223 235632 · E-Mail: enquiries@baufritz.co.uk · Web: www.baufritz.co.uk