

Fact sheet

Barn L Compact



House size

Dimensions	Wing one: 7.06 x 20.00
	Wing two: 7.06 x 17.68 m
Living area ground floor	228 m ²
Living area first floor	47 m ²
Total living area	275 m ²

Façade

Timber

Roof

Pitched roof

Architecture and special features

- Compact, more cost-efficient addition to the Barn Collection
- Contemporary design blends with traditional craftsmanship
- Four bedrooms, two with ensuite bathrooms
- A 25 sqm loft extension with a storage unit accessible via a hatch with a pull-down ladder
- Conforms with passive house standards

Standard specification

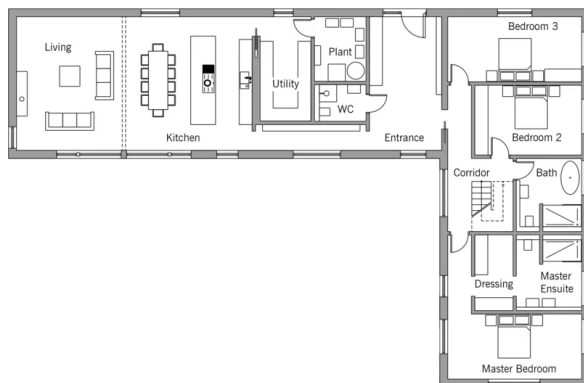
- Triple-glazed timber and aluminium windows, fitted in the factory without PU foam
- Holistic health concept with outstanding indoor air quality
- Effective Xund-E electrosmog protection and shielded electrical installations
- Superior-quality, environmentally friendly interiors that are healthy to live in thanks to innovative solutions developed in-house by Baufritz (e.g. interior paints, floor adhesives, etc.)
- HOIZ natural, organic insulation made from wood shavings — developed in-house, certified by natureplus and IBN



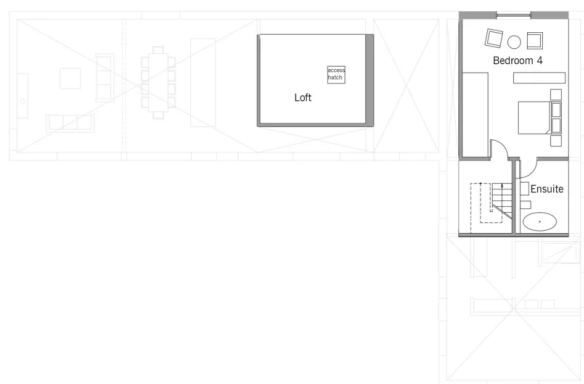
BAUFRITZ[®]
WIR BAUEN GESUNDHEIT

Floor plans Barn L Compact

Ground Floor



First Floor



BAUFRITZ[®]
WIR BAUEN GESUNDHEIT

Baufritz (UK) Limited

Camboro Business Park · The Workplace · Oakington Road, Girton · Cambridge CB3 0QH
Telephone +44 (0) 1223 235632 · E-Mail: enquiries@baufritz.co.uk · Web: www.baufritz.co.uk