

# Fact sheet

## Barn XL



### House size

Dimensions 28.55 x 18.20 m

Living area ground floor 341 m<sup>2</sup>

Total living area 341 m<sup>2</sup>

### Façade

Timber

### Roof

Pitched roof

### Architecture and special features

- Contemporary, single-storey barn-style home with a U shape
- Spacious interiors with an open-plan kitchen, dining and living room
- Four large bedrooms with en-suite bathrooms
- Choice of claddings, roof surfaces and interior furnishings
- Skylight with fixed glazing and solar shades
- Buildings services with A+ rating and the option of solar panels

### Standard specification

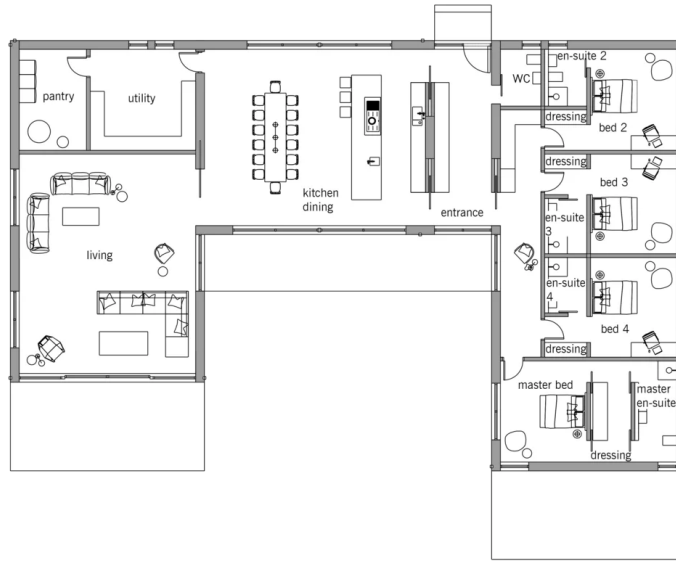
- Triple-glazed timber and aluminium windows, fitted in the factory without PU foam
- Holistic health concept with outstanding indoor air quality
- Effective Xund-E electrosmog protection and shielded electrical installations
- Superior-quality, environmentally friendly interiors that are healthy to live in thanks to innovative solutions developed in-house by Baufritz (e.g. interior paints, floor adhesives, etc.)
- HOIZ natural, organic insulation made from wood shavings — developed in-house, certified by natureplus and IBN



**BAUFRITZ**<sup>®</sup>  
WIR BAUEN GESUNDHEIT

Floor plans Barn XL

Ground Floor



**BAUFRITZ**<sup>®</sup>  
WIR BAUEN GESUNDHEIT

Baufritz (UK) Limited

Camboro Business Park · The Workplace · Oakington Road, Girton · Cambridge CB3 0QH  
Telephone +44 (0) 1223 235632 · E-Mail: enquiries@baufritz.co.uk · Web: www.baufritz.co.uk