

# Fact sheet

## Barn M



### House size

Dimensions	8.20 x 21.33 m
Living area ground floor	150 m <sup>2</sup>
Living area first floor	142 m <sup>2</sup>
Total living area	292 m <sup>2</sup>

### Façade

Timber

### Roof

Pitched roof

### Architecture and special features

- Contemporary, two-storey family home in a barn-style design
- Four bedrooms, three with en-suite bathrooms and dressing rooms
- Choice of colours for cladding the façade and roof
- Wide choice of interior furnishings
- Skylight with fixed glazing and solar shades
- Buildings services with A+ rating and the option of solar panels

### Standard specification

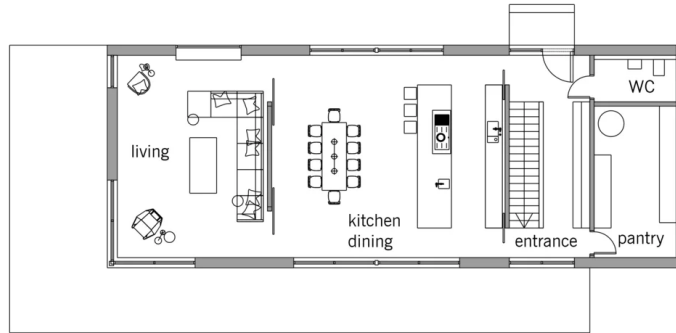
- Triple-glazed timber and aluminium windows, fitted in the factory without PU foam
- Holistic health concept with outstanding indoor air quality
- Effective Xund-E electrosmog protection and shielded electrical installations
- Superior-quality, environmentally friendly interior furnishings (incl. interior paints, floor adhesives, etc.)
- HOIZ natural, organic insulation made from wood shavings — developed in-house, certified by natureplus and IBN



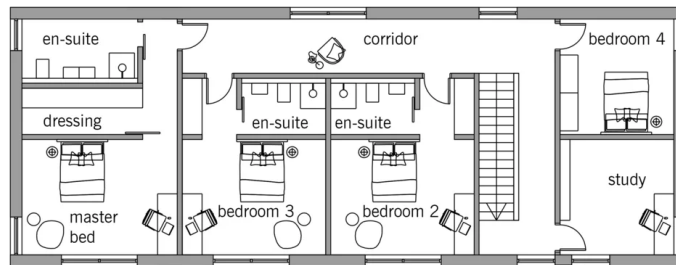
**BAUFRITZ**<sup>®</sup>  
WIR BAUEN GESUNDHEIT

# Floor plans Barn M

Ground Floor



First Floor



**BAUFRITZ**<sup>®</sup>  
WIR BAUEN GESUNDHEIT

Baufritz (UK) Limited

Camboro Business Park · The Workplace · Oakington Road, Girton · Cambridge CB3 0QH  
Telephone +44 (0) 1223 235632 · E-Mail: [enquiries@baufritz.co.uk](mailto:enquiries@baufritz.co.uk) · Web: [www.baufritz.co.uk](http://www.baufritz.co.uk)