

Fact sheet

Bond



House size

Dimensions	8.72 x 17.47 m
Living area basement	130 m ²
Living area ground floor	132 m ²
Living area second floor	147 m ²
Total living area	409 m ²

Façade

Timber cladding "Rondo" in natural finish in combination with white mineral render

Roof

Hipped roof

Heating and ventilation

- Solar panels, photovoltaic panels
- Wood burner
- Gas boiler
- Decentralised Mechanical Ventilation with Heat Recovery

Architecture and special features

- Well-proportioned bespoke family home built on hillside
- Tiered garden with large outdoor swimming pool
- Upper floor rooms open up to continuous glazed balcony
- Master bedroom with bespoke walk-in dressing room
- Games room, home gym and utility room in basement

Standard specification

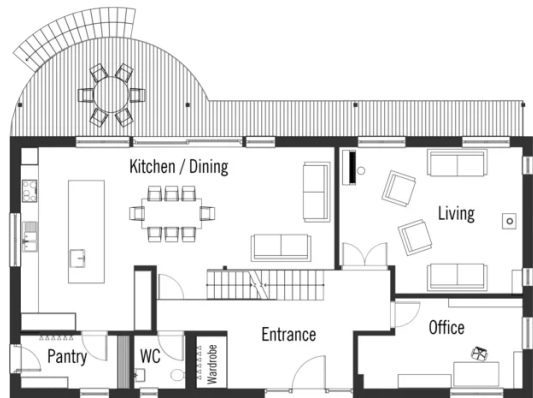
- Triple-glazed timber and aluminium windows, fitted in the factory without PU foam
- Holistic health concept with outstanding indoor air quality
- Effective Xund-E electrosmog protection and shielded electrical installations
- Superior-quality, environmentally friendly interior furnishings (incl. interior paints, floor adhesives, etc.)
- HOIZ natural, organic insulation made from wood shavings — developed in-house, certified by natureplus and IBN



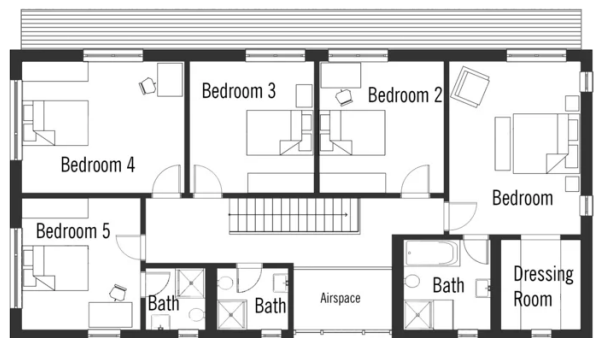
BAUFRITZ[®]
WIR BAUEN GESUNDHEIT

Floor plans Bond

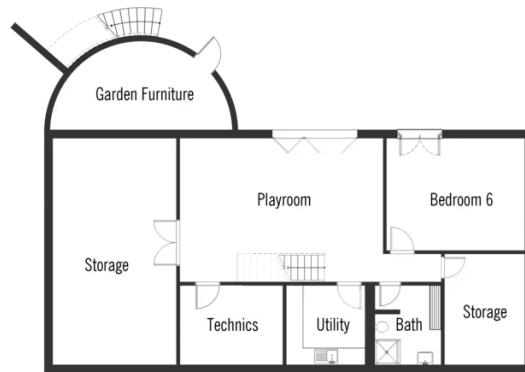
Ground Floor



First Floor



BAUFRITZ[®]
WIR BAUEN GESUNDHEIT



BAUFRITZ[®]
WIR BAUEN GESUNDHEIT

Baufritz (UK) Limited

Camboro Business Park · The Workplace · Oakington Road, Girton · Cambridge CB3 0QH
Telephone +44 (0) 1223 235632 · E-Mail: enquiries@baufritz.co.uk · Web: www.baufritz.co.uk