

Fact sheet

Brunt



House size

Dimensions	19.45 x 15.17 m
Living area ground floor	173 m ²
Living area first floor	139 m ²
Total living area	312 m ²

Façade

Timber, mineral render, Kentish ragstone

Roof

Pitched roof, monopitched roof and a lean-to roof

Heating and ventilation

- Underfloor heating
- Air source heat pump
- Photovoltaic panels linked to a Tesla Power Wall battery
- Decentralised mechanical ventilation

Architecture and special features

- Contemporary family home with views over the Weald of Kent
- Three linked volumes breaking down the mass of the building
- Use of local materials that are sympathetic to the site
- Free-flowing interiors with comfortable hotel-style bedrooms on first floor
- PV installation generating most of the electricity needed to run the house
- Future-proof design with wheelchair-accessible bedroom on the ground floor

Standard specification

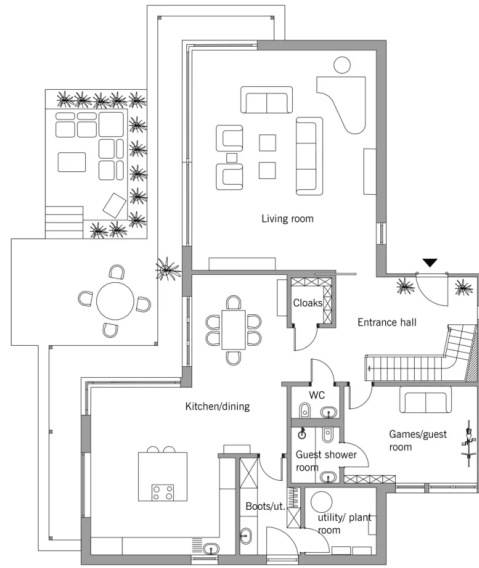
- Triple-glazed timber and aluminium windows, fitted in the factory without PU foam
- Holistic health concept with outstanding indoor air quality
- Effective Xund-E electrosmog protection and shielded electrical installations
- Superior-quality, environmentally friendly interiors that are healthy to live in thanks to innovative solutions developed in-house by Baufritz (e.g. interior paints, floor adhesives, etc.)
- HOIZ natural, organic insulation made from wood shavings — developed in-house, certified by natureplus and IBN



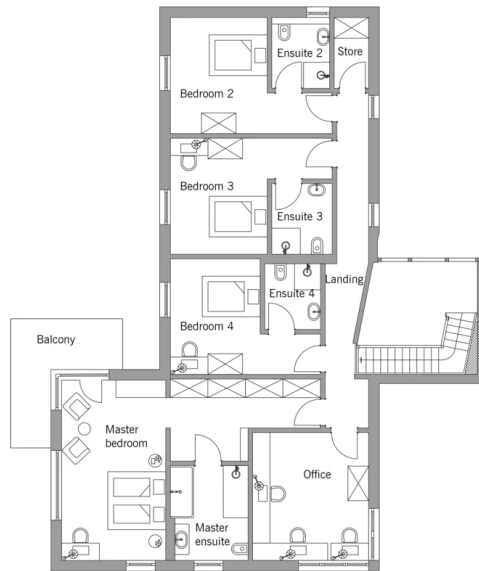
BAUFRITZ[®]
WIR BAUEN GESUNDHEIT

Floor plans Brunt

Ground Floor



First Floor



BAUFRITZ[®]
WIR BAUEN GESUNDHEIT

Baufritz (UK) Limited

Camboro Business Park · The Workplace · Oakington Road, Girton · Cambridge CB3 0QH
Telephone +44 (0) 1223 235632 · E-Mail: enquiries@baufritz.co.uk · Web: www.baufritz.co.uk