

Fact sheet

Classic XL



House size

Dimensions	12.60 x 11.35 (house), 11.35 x 4.47 (outbuilding) m
Living area basement	51 m ²
Living area ground floor	153 m ²
Living area first floor	142 m ²
Living area second floor	61 m ²
Total living area	407 m ²

Façade

Render

Roof

Crown roof

Architecture and special features

- Palladian-style house with a focus on symmetry and balanced proportions
- Substantial, three-storey family home with seven bedrooms and five bathrooms
- Choice of roof surfaces and interior furnishings
- Garage for three cars
- Option of cornices and pilaster strips on the façade
- Buildings services with A+ rating and the option of solar panels

Standard specification

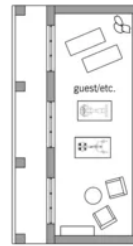
- Triple-glazed timber and aluminium windows, fitted in the factory without PU foam
- Holistic health concept with outstanding indoor air quality
- Effective Xund-E electrosmog protection and shielded electrical installations
- Superior-quality, environmentally friendly interior furnishings (incl. interior paints, floor adhesives, etc.)
- HOIZ natural, organic insulation made from wood shavings — developed in-house, certified by natureplus and IBN



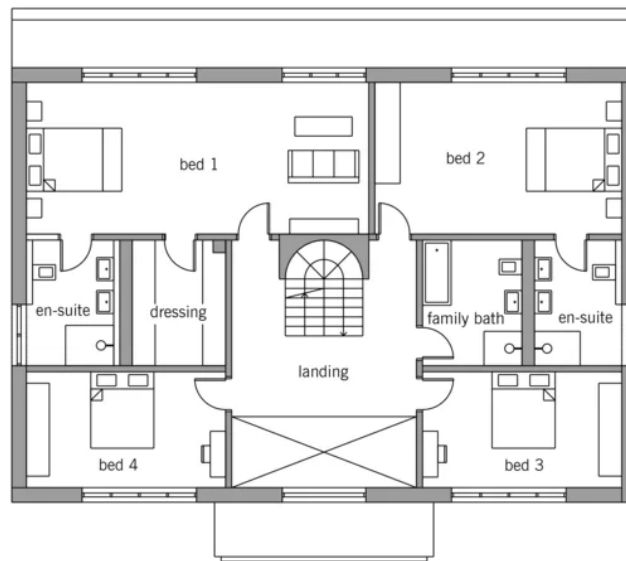
BAUFRITZ[®]
WIR BAUEN GESUNDHEIT

Floor plans Classic XL

Ground Floor

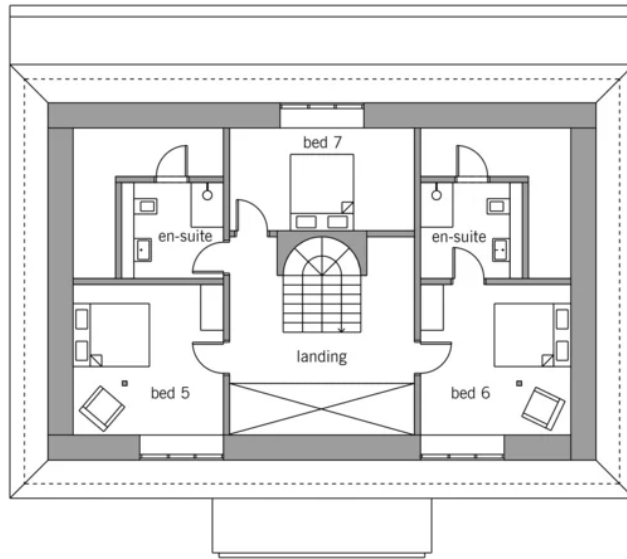


First Floor

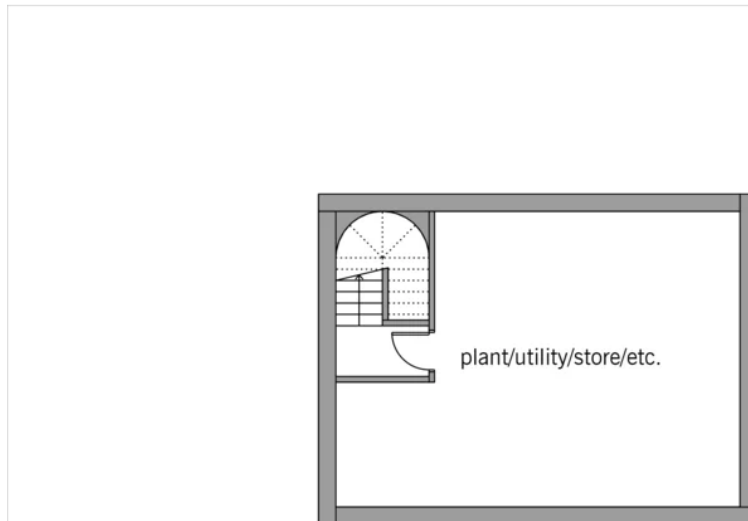


BAUFRITZ[®]
WIR BAUEN GESUNDHEIT

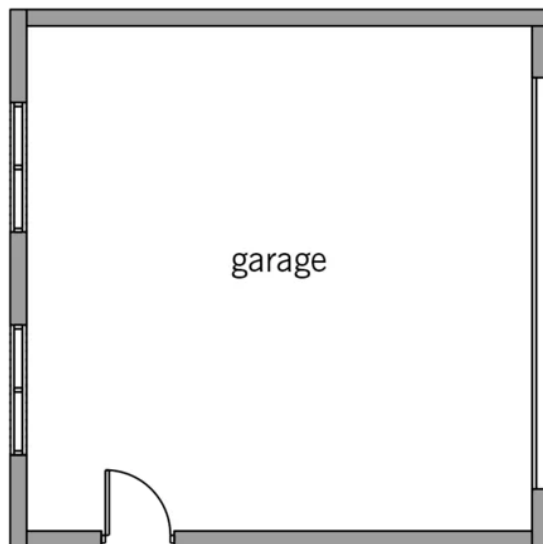
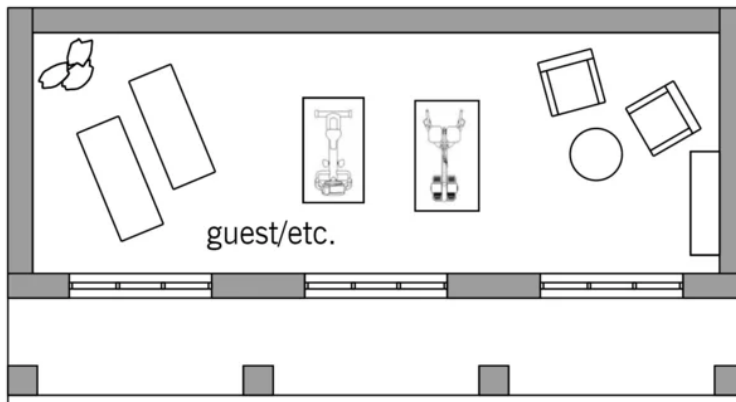
Attic



Basement



BAUFRITZ[®]
WIR BAUEN GESUNDHEIT



BAUFRITZ[®]
WIR BAUEN GESUNDHEIT

Baufritz (UK) Limited

Camboro Business Park · The Workplace · Oakington Road, Girton · Cambridge CB3 0QH
Telephone +44 (0) 1223 235632 · E-Mail: enquiries@baufritz.co.uk · Web: www.baufritz.co.uk