

# Fact sheet

## Cliff House



### House size

Dimensions	17.01 x 12.01 12.01 x 7.63 m
Living area basement	231 m <sup>2</sup>
Living area ground floor	164 m <sup>2</sup>
Living area second floor	60 m <sup>2</sup>
Total living area	455 m <sup>2</sup>

### Façade

Timber cladding "Rondo" in combination with mineral render and glazed façade

### Roof

Pitched roof

### Heating and ventilation

- Ground source heat pump borehole
- Underfloor heating
- In-wall heating system

### Architecture and special features

- Individually designed spectacular home
- Extensively glazed on two sides
- Structurally integrated into a steep rocky slope
- Private indoor sport and wellness area
- "Children's kingdom" on top floor

### Standard specification

- Triple-glazed timber and aluminium windows, fitted in the factory without PU foam
- Holistic health concept with outstanding indoor air quality
- Effective Xund-E electrosmog protection and shielded electrical installations
- Superior-quality, environmentally friendly interiors that are healthy to live in thanks to innovative solutions developed in-house by Baufritz (e.g. interior paints, floor adhesives, etc.)
- HOIZ natural, organic insulation made from wood shavings — developed in-house, certified by natureplus and IBN



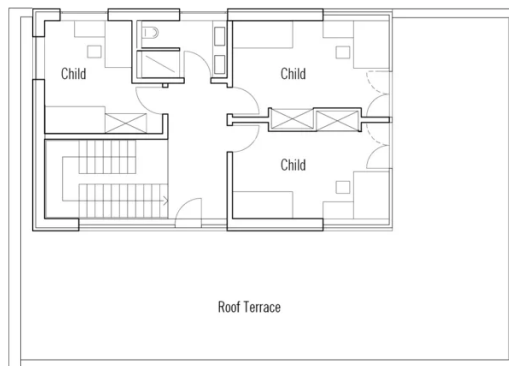
**BAUFRITZ**<sup>®</sup>  
WIR BAUEN GESUNDHEIT

# Floor plans Cliff House

Ground Floor



First Floor





**BAUFRITZ**<sup>®</sup>  
WIR BAUEN GESUNDHEIT

Baufritz (UK) Limited

Camboro Business Park · The Workplace · Oakington Road, Girton · Cambridge CB3 0QH  
Telephone +44 (0) 1223 235632 · E-Mail: [enquiries@baufritz.co.uk](mailto:enquiries@baufritz.co.uk) · Web: [www.baufritz.co.uk](http://www.baufritz.co.uk)