

Fact sheet

Clifton



House size

Dimensions	22.51 x 9.34 m
Living area basement	131 m ²
Living area ground floor	135 m ²
Living area first floor	126 m ²
Total living area	392 m ²

Façade

Timber cladding "Rondo" in natural finish in combination with white mineral render

Roof

Mono pitch roof and flat roof

Heating and ventilation

- Air source heat pump
- Hot water cylinder
- Underfloor heating
- Mechanical Ventilation with Heat Recovery

Architecture and special features

- Corner windows flood interiors with natural light
- Continuous balcony with glass balustrades allow uninterrupted sight lines
- Generous infinity pool with hot tub and comfortable deck chairs
- Dark U-shaped staircase with glass balustrade
- Floor-to-ceiling windows offer views of beautiful landscaped gardens

Standard specification

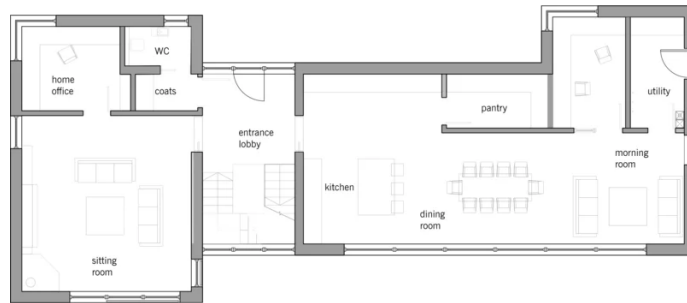
- Triple-glazed timber and aluminium windows, fitted in the factory without PU foam
- Holistic health concept with outstanding indoor air quality
- Effective Xund-E electrosmog protection and shielded electrical installations
- Superior-quality, environmentally friendly interior furnishings (incl. interior paints, floor adhesives, etc.)
- HOIZ natural, organic insulation made from wood shavings — developed in-house, certified by natureplus and IBN



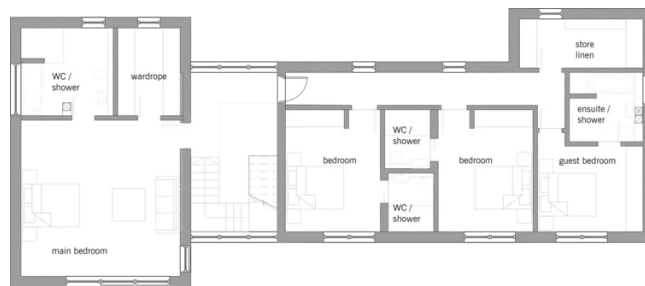
BAUFRITZ[®]
WIR BAUEN GESUNDHEIT

Floor plans Clifton

Ground Floor



First Floor



BAUFRITZ[®]
WIR BAUEN GESUNDHEIT



BAUFRITZ[®]
WIR BAUEN GESUNDHEIT

Baufritz (UK) Limited

Camboro Business Park · The Workplace · Oakington Road, Girton · Cambridge CB3 0QH
Telephone +44 (0) 1223 235632 · E-Mail: enquiries@baufritz.co.uk · Web: www.baufritz.co.uk