

# Fact sheet

## Crichton



### House size

Dimensions	21.55 x 10.70 m
Living area ground floor	160 m <sup>2</sup>
Living area second floor	152 m <sup>2</sup>
Total living area	312 m <sup>2</sup>

### Façade

Timber cladding "Rondo" in natural finish in combination with white mineral render

### Roof

Flat roof

### Heating and ventilation

- Air source heat pump, underfloor heating, photovoltaic panels, central ventilation system

### Architecture and special features

- Individually designed home
- Unique architectural features
- Large expanses of glass
- Innovative protection layer against electrosmog
- Shielded cables
- Corner window with a comfortable seating area

### Standard specification

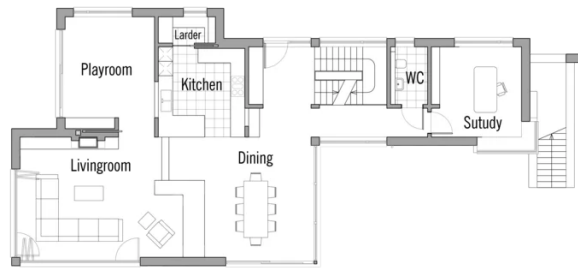
- Triple-glazed timber and aluminium windows, fitted in the factory without PU foam
- Holistic health concept with outstanding indoor air quality
- Effective Xund-E electrosmog protection and shielded electrical installations
- Superior-quality, environmentally friendly interior furnishings (incl. interior paints, floor adhesives, etc.)
- HOIZ natural, organic insulation made from wood shavings — developed in-house, certified by natureplus and IBN



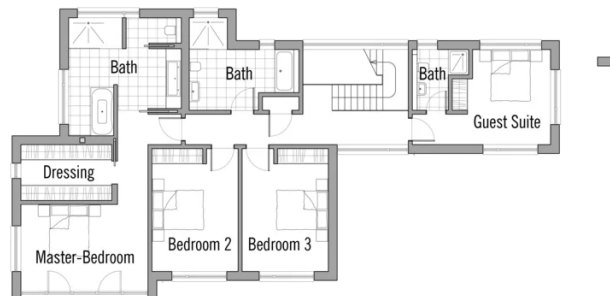
**BAUFRITZ**<sup>®</sup>  
WIR BAUEN GESUNDHEIT

# Floor plans Crichton

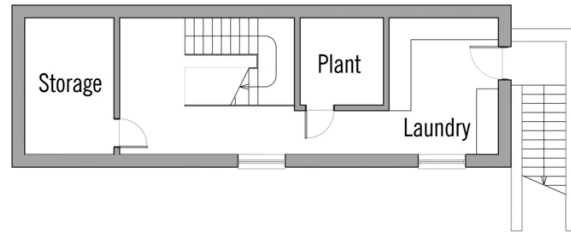
Ground Floor



First Floor



**BAUFRITZ**<sup>®</sup>  
WIR BAUEN GESUNDHEIT



**BAUFRITZ**<sup>®</sup>  
WIR BAUEN GESUNDHEIT

Baufritz (UK) Limited

Camboro Business Park · The Workplace · Oakington Road, Girton · Cambridge CB3 0QH  
Telephone +44 (0) 1223 235632 · E-Mail: [enquiries@baufritz.co.uk](mailto:enquiries@baufritz.co.uk) · Web: [www.baufritz.co.uk](http://www.baufritz.co.uk)