

Fact sheet

Crossland



House size

Dimensions	43.88 x 21.98 m
Living area basement	291 m ²
Living area ground floor	365 m ²
Living area second floor	97 m ²
Total living area	753 m ²

Façade

Mineral render in combination with sheet metal cladding and natural stone, Post and Beam

Roof

Flat roof

Heating and ventilation

- Air source heat pump
- Photovoltaic panels
- Underfloor heating
- Mechanical Ventilation with Heat Recovery

Architecture and special features

- Designed to blend in with spectacular surroundings
- Exceptional combination of various structures and elements
- Sweeping terraces and patios
- Unique features incl. rounded external corners, indoor pool, wine tasting room & cellar, gym and home cinema

Standard specification

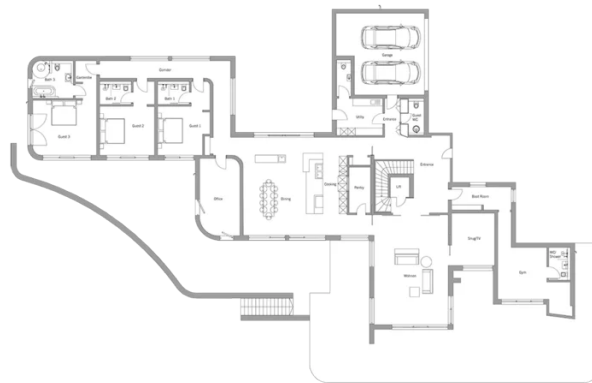
- Triple-glazed timber and aluminium windows, fitted in the factory without PU foam
- Holistic health concept with outstanding indoor air quality
- Effective Xund-E electrosmog protection and shielded electrical installations
- Superior-quality, environmentally friendly interiors that are healthy to live in thanks to innovative solutions developed in-house by Baufritz (e.g. interior paints, floor adhesives, etc.)
- HOIZ natural, organic insulation made from wood shavings — developed in-house, certified by natureplus and IBN



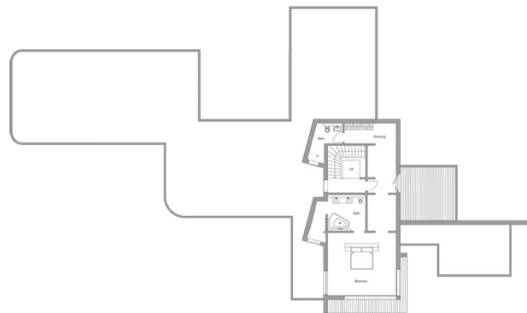
BAUFRITZ[®]
WIR BAUEN GESUNDHEIT

Floor plans Crossland

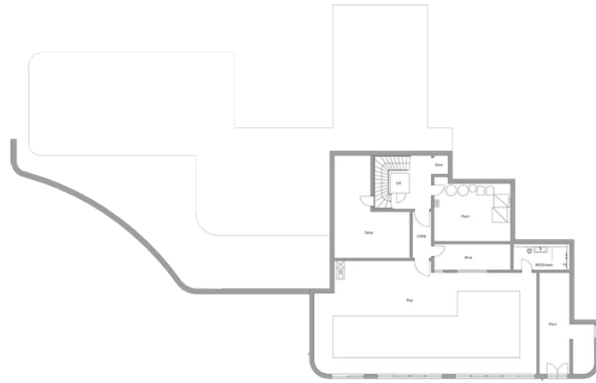
Ground Floor



First Floor



BAUFRITZ[®]
WIR BAUEN GESUNDHEIT



BAUFRITZ[®]
WIR BAUEN GESUNDHEIT

Baufritz (UK) Limited

Camboro Business Park · The Workplace · Oakington Road, Girton · Cambridge CB3 0QH
Telephone +44 (0) 1223 235632 · E-Mail: enquiries@baufritz.co.uk · Web: www.baufritz.co.uk