

Fact sheet

Graylings



House size

Dimensions	21.99 x 13.20 m
Living area ground floor	162 m ²
Living area second floor	90 m ²
Total living area	252 m ²

Façade

Timber

Roof

Pitched roof

Heating and ventilation

- Underfloor heating
- Gas boiler
- Photovoltaic panels
- Gas burner
- Mechanical ventilation with heat exchange

Architecture and special features

- Contemporary home with outstanding views over the Surrey Hills
- Designed “upside down” with bedrooms below and an open living area above
- Three interlinking volumes forming an “H” shape
- House and garden inspired by Japanese culture
- Ideal for family get-togethers
- Living roof and green spaces to foster biodiversity

Standard specification

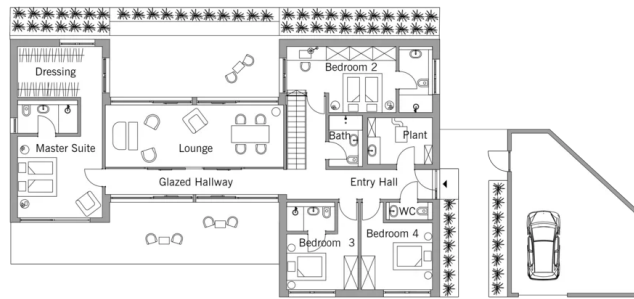
- Triple-glazed timber and aluminium windows, fitted in the factory without PU foam
- Holistic health concept with outstanding indoor air quality
- Effective Xund-E electrosmog protection and shielded electrical installations
- Superior-quality, environmentally friendly interior furnishings (incl. interior paints, floor adhesives, etc.)
- HOIZ natural, organic insulation made from wood shavings — developed in-house, certified by natureplus and IBN



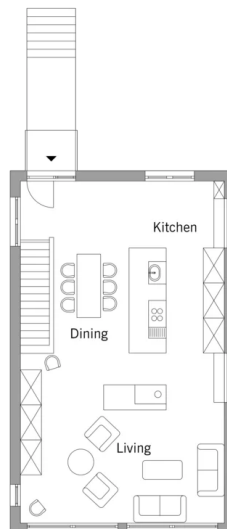
BAUFRITZ[®]
WIR BAUEN GESUNDHEIT

Floor plans Graylings

Ground Floor



First Floor



BAUFRITZ[®]
WIR BAUEN GESUNDHEIT

Baufritz (UK) Limited

Camboro Business Park · The Workplace · Oakington Road, Girton · Cambridge CB3 0QH
Telephone +44 (0) 1223 235632 · E-Mail: enquiries@baufritz.co.uk · Web: www.baufritz.co.uk