

Fact sheet

Hauck



House size

| | |
|--------------------------|--------------------|
| Dimensions | 18.9 x 13.2 m |
| Living area ground floor | 295 m ² |
| Living area second floor | 154 m ² |
| Total living area | 449 m ² |

Façade

Timber cladding "Credo" in combination with white mineral render

Roof

Combination of hipped and pitched roofs

Heating and ventilation

- Ground source heat pump
- Solar panels
- Central ventilation system

Architecture and special features

- Bespoke design influenced by Frank Lloyd Wright's Prairie style homes
- Large sheltered terrace
- Triangular window
- Fitness area, home cinema and sauna in basement

Standard specification

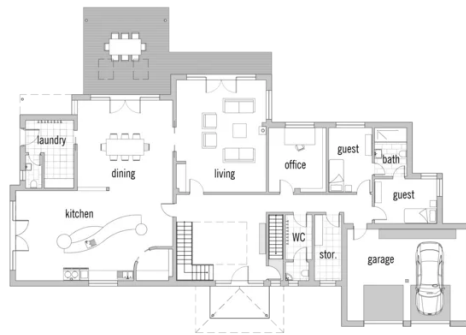
- Triple-glazed timber and aluminium windows, fitted in the factory without PU foam
- Holistic health concept with outstanding indoor air quality
- Effective Xund-E electrosmog protection and shielded electrical installations
- Superior-quality, environmentally friendly interiors that are healthy to live in thanks to innovative solutions developed in-house by Baufritz (e.g. interior paints, floor adhesives, etc.)
- HOIZ natural, organic insulation made from wood shavings — developed in-house, certified by natureplus and IBN



BAUFRITZ[®]
WIR BAUEN GESUNDHEIT

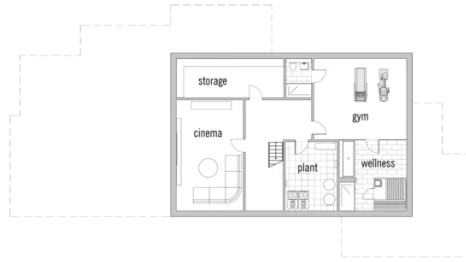
Floor plans Hauck

Ground Floor



First Floor





BAUFRITZ[®]
WIR BAUEN GESUNDHEIT

Baufritz (UK) Limited

Camboro Business Park · The Workplace · Oakington Road, Girton · Cambridge CB3 0QH
Telephone +44 (0) 1223 235632 · E-Mail: enquiries@baufritz.co.uk · Web: www.baufritz.co.uk