

Fact sheet

Joydon



House size

Dimensions	11.91 x 14.41 m
Living area basement	117 m ²
Living area ground floor	136 m ²
Living area second floor	140 m ²
Total living area	393 m ²

Façade

Mineral render

Roof

Pitched roof, 22.5°, flat roof

Heating and ventilation

- Mechanical ventilation with heat recovery
- Underfloor heating
- Gas boiler
- Photovoltaic panels

Architecture and special features

- Modern, three-story detached family home
- Spacious double height entrance hall
- Wellness oasis with organic sauna and steam bath
- Elegant staircase with integrated lighting
- Floor-to-ceiling triple glazed windows
- Integrated double garage

Standard specification

- Triple-glazed timber and aluminium windows, fitted in the factory without PU foam
- Holistic health concept with outstanding indoor air quality
- Effective Xund-E electrosmog protection and shielded electrical installations
- Superior-quality, environmentally friendly interiors that are healthy to live in thanks to innovative solutions developed in-house by Baufritz (e.g. interior paints, floor adhesives, etc.)
- HOIZ natural, organic insulation made from wood shavings — developed in-house, certified by natureplus and IBN



BAUFRITZ[®]
WIR BAUEN GESUNDHEIT

Floor plans Joydon

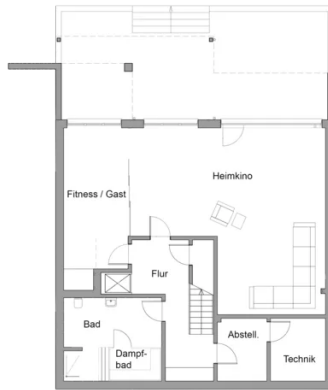
Ground Floor



First Floor



BAUFRITZ[®]
WIR BAUEN GESUNDHEIT



BAUFRITZ[®]
WIR BAUEN GESUNDHEIT

Baufritz (UK) Limited

Camboro Business Park · The Workplace · Oakington Road, Girton · Cambridge CB3 0QH
Telephone +44 (0) 1223 235632 · E-Mail: enquiries@baufritz.co.uk · Web: www.baufritz.co.uk