

# Fact sheet

## Liming



### House size

Dimensions	16.95 x 13.82 m
Living area basement	74 m <sup>2</sup>
Living area ground floor	180 m <sup>2</sup>
Living area first floor	164 m <sup>2</sup>
Total living area	418 m <sup>2</sup>

### Façade

Mineral render

### Roof

Flat roof

### Heating and ventilation

- Air source heat pump
- Mechanical Ventilation with Heat Recovery, Underfloor heating

### Architecture and special features

- Bauhaus architecture with elegant geometric forms, three storeys with two children's bedrooms, each with en-suite bath
- Seamless transitions between outside and inside. Covered terraces directly connected to the living space

### Standard specification

- Triple-glazed timber and aluminium windows, fitted in the factory without PU foam
- Holistic health concept with outstanding indoor air quality
- Effective Xund-E electrosmog protection and shielded electrical installations
- Superior-quality, environmentally friendly interiors that are healthy to live in thanks to innovative solutions developed in-house by Baufritz (e.g. interior paints, floor adhesives, etc.)
- HOIZ natural, organic insulation made from wood shavings — developed in-house, certified by natureplus and IBN



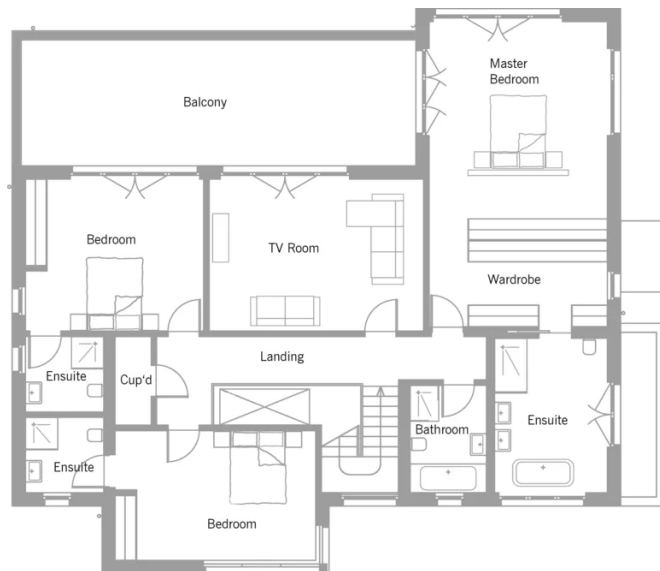
**BAUFRITZ**<sup>®</sup>  
WIR BAUEN GESUNDHEIT

# Floor plans Liming

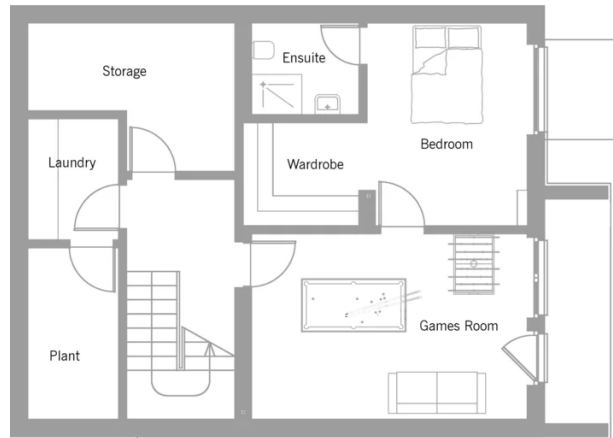
Ground Floor



First Floor



**BAUFRITZ**<sup>®</sup>  
WIR BAUEN GESUNDHEIT



**BAUFRITZ**<sup>®</sup>  
WIR BAUEN GESUNDHEIT

Baufritz (UK) Limited

Camboro Business Park · The Workplace · Oakington Road, Girton · Cambridge CB3 0QH  
Telephone +44 (0) 1223 235632 · E-Mail: [enquiries@baufritz.co.uk](mailto:enquiries@baufritz.co.uk) · Web: [www.baufritz.co.uk](http://www.baufritz.co.uk)