

Fact sheet

Locke



House size

Dimensions	28.90 x 26.40 m
Living area ground floor	344 m ²
Living area first floor	94 m ²
Living area second floor	88 m ²
Total living area	526 m ²

Façade

Black-stained vertical timber cladding in combination with flint, post and beam

Roof

Pitched roof

Heating and ventilation

- Underfloor heating
- Air source heat pump
- Mechanical ventilation with heat exchange
- Photovoltaic panels

Architecture and special features

- Contemporary barn-style design
- Use of local materials throughout (clay tile roofs, flint walls, hand-made bricks)
- Oak barn with vaulted ceiling handcrafted using traditional joinery techniques
- Landscaped grounds with a swimming pool and an outdoor sauna
- Atmospheric home cinema
- Practical indoor gym with direct access to the tennis court

Standard specification

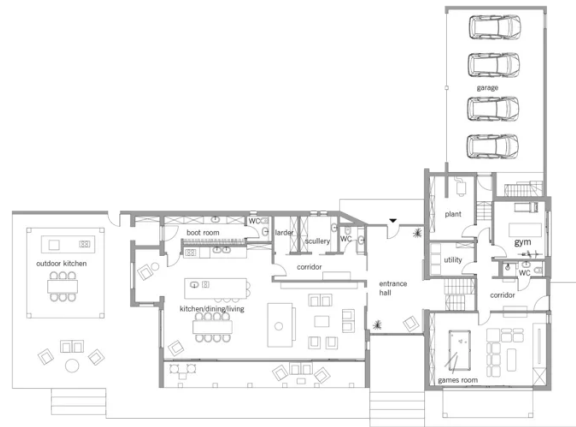
- Triple-glazed timber and aluminium windows, fitted in the factory without PU foam
- Holistic health concept with outstanding indoor air quality
- Effective Xund-E electrosmog protection and shielded electrical installations
- Superior-quality, environmentally friendly interiors that are healthy to live in thanks to innovative solutions developed in-house by Baufritz (e.g. interior paints, floor adhesives, etc.)
- HOIZ natural, organic insulation made from wood shavings — developed in-house, certified by natureplus and IBN



BAUFRITZ[®]
WIR BAUEN GESUNDHEIT

Floor plans Locke

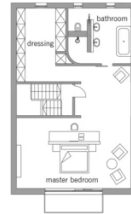
Ground Floor



First Floor



BAUFRITZ
WIR BAUEN GESUNDHEIT



BAUFRITZ[®]
WIR BAUEN GESUNDHEIT

Baufritz (UK) Limited

Camboro Business Park · The Workplace · Oakington Road, Girton · Cambridge CB3 0QH
Telephone +44 (0) 1223 235632 · E-Mail: enquiries@baufritz.co.uk · Web: www.baufritz.co.uk