

# Fact sheet

## Long



### House size

Dimensions	22.89 x 12.84 m
Living area ground floor	215 m <sup>2</sup>
Living area first floor	160 m <sup>2</sup>
Living area second floor	90 m <sup>2</sup>
Total living area	465 m <sup>2</sup>

### Façade

Timber and render

### Roof

Flat roof

### Heating and ventilation

- Air source heat pump
- Mechanical ventilation with heat exchange

### Architecture and special features

- Grey mineral render and timber façade
- Inverted floorplan with master suite on the upper floor
- Staircase with running timber slats and a skylight above
- First-floor terrace across the entire width of the house
- Expansive glazing and roof lights allow light into the interior
- Intimate spaces with a muted colour palette

### Standard specification

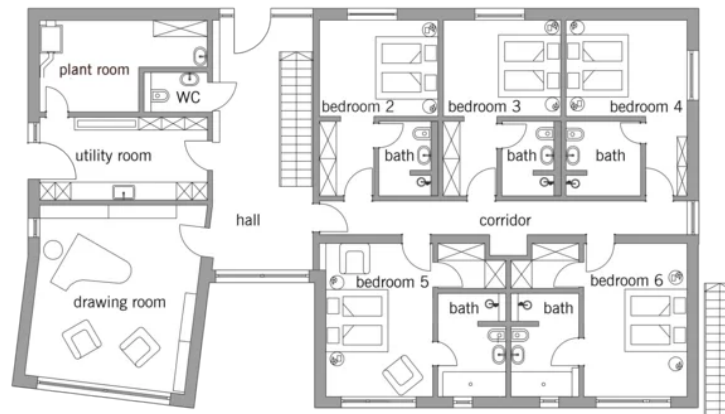
- Triple-glazed timber and aluminium windows, fitted in the factory without PU foam
- Holistic health concept with outstanding indoor air quality
- Effective Xund-E electrosmog protection and shielded electrical installations
- Superior-quality, environmentally friendly interior furnishings (incl. interior paints, floor adhesives, etc.)
- HOIZ natural, organic insulation made from wood shavings — developed in-house, certified by natureplus and IBN



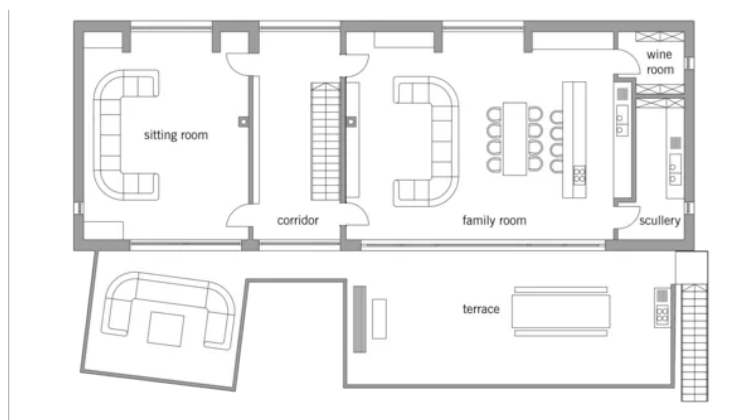
**BAUFRITZ**<sup>®</sup>  
WIR BAUEN GESUNDHEIT

# Floor plans Long

Ground Floor

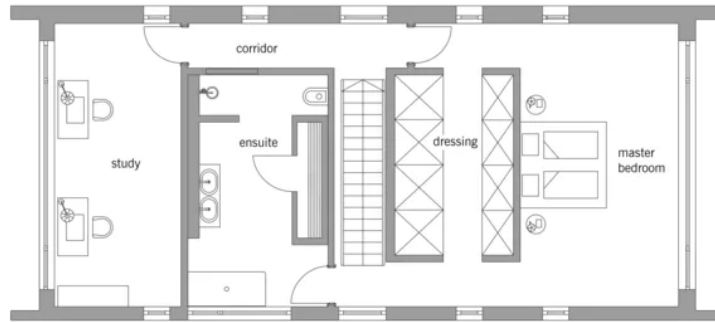


First Floor

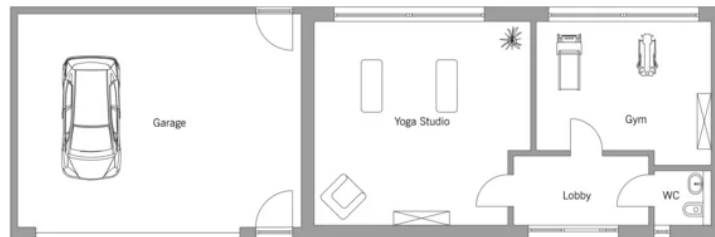


**BAUFRITZ**<sup>®</sup>  
WIR BAUEN GESUNDHEIT

Second Floor



Garage



**BAUFRITZ**<sup>®</sup>  
WIR BAUEN GESUNDHEIT

Baufritz (UK) Limited

Camboro Business Park · The Workplace · Oakington Road, Girton · Cambridge CB3 0QH  
Telephone +44 (0) 1223 235632 · E-Mail: enquiries@baufritz.co.uk · Web: www.baufritz.co.uk