

Fact sheet

Lunn



House size

Dimensions	1248 x 6,33 each wing m
Living area ground floor	129 m ²
Living area first floor	109 m ²
Total living area	238 m ²

Façade

Timber cladding "Scala" in silver grey*, treated with a translucent light mineral based coating

Roof

- Pitched roof, 36,54°

Heating and ventilation

- Air source heat pump
- Underfloor heating
- Mechanical ventilation system with heat recovery

Architecture and special features

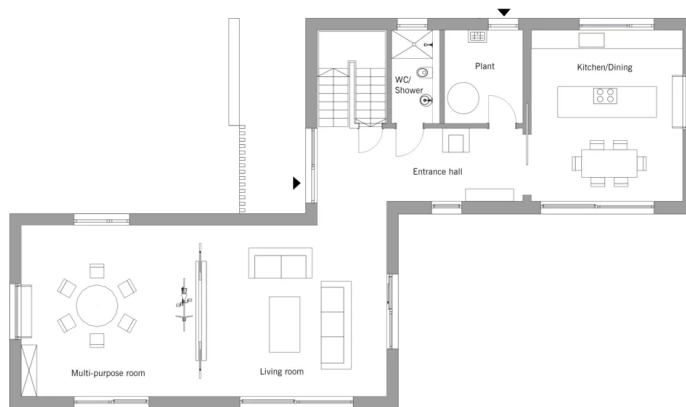
- Contemporary family home in barn style
- Designed as two distinct, interconnected volumes to minimise visual impact
- Brises soleil and carefully positioned windows give shape and definition to the façade
- Open plan interiors with flowing transitions and long vistas
- A large, fixed frame window in the master bedroom overlooking the dining area
- Double-height ceiling on the ground floor creates a feeling of space with an interplay of light

Standard specification

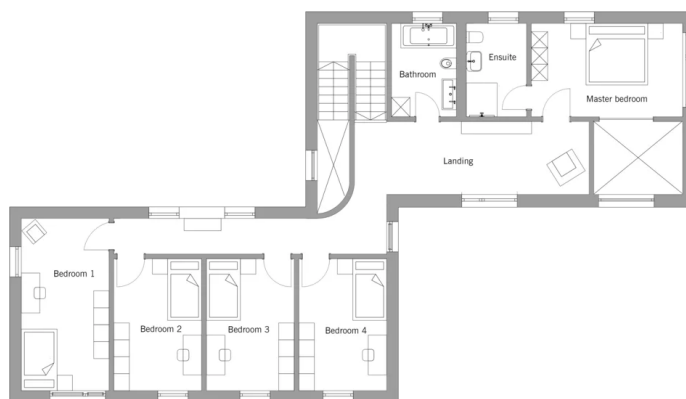
- Triple-glazed timber and aluminium windows, fitted in the factory without PU foam
- Holistic health concept with outstanding indoor air quality
- Effective Xund-E electrosmog protection and shielded electrical installations
- Superior-quality, environmentally friendly interior furnishings (incl. interior paints, floor adhesives, etc.)
- HOIZ natural, organic insulation made from wood shavings — developed in-house, certified by natureplus and IBN

Floor plans Lunn

Ground Floor



First Floor



BAUFRITZ[®]
WIR BAUEN GESUNDHEIT