

# Fact sheet

## Mackintosh



### House size

Dimensions	Main wing: 8.20 x 24.45
	West wing: 7.60 x 18.20 m
Living area ground floor	260 m <sup>2</sup>
Living area second floor	181 m <sup>2</sup>
Total living area	441 m <sup>2</sup>

### Façade

Brick combined with Porcelanosa ceramic tiles, broken up by elements with a wave-like design

### Roof

Flat roof

### Heating and ventilation

- Air source heat pump
- Underfloor heating
- Mechanical Ventilation with Heat Recovery

### Standard specification

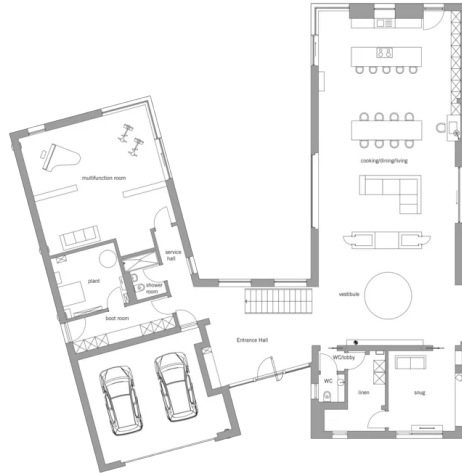
- Triple-glazed timber and aluminium windows, fitted in the factory without PU foam
- Holistic health concept with outstanding indoor air quality
- Effective Xund-E electrosmog protection and shielded electrical installations
- Superior-quality, environmentally friendly interior furnishings (incl. interior paints, floor adhesives, etc.)
- HOIZ natural, organic insulation made from wood shavings — developed in-house, certified by natureplus and IBN



**BAUFRITZ**<sup>®</sup>  
WIR BAUEN GESUNDHEIT

# Floor plans Mackintosh

Ground Floor



First Floor



**BAUFRITZ**<sup>®</sup>  
WIR BAUEN GESUNDHEIT

Baufritz (UK) Limited

Camboro Business Park · The Workplace · Oakington Road, Girton · Cambridge CB3 0QH  
Telephone +44 (0) 1223 235632 · E-Mail: enquires@baufritz.co.uk · Web: www.baufritz.co.uk