

Fact sheet

Mehrblick



House size

Dimensions	12.51 x 16.30 m
Living area ground floor	144 m ²
Living area first floor	131 m ²
Living area second floor	80 m ²
Total living area	355 m ²

Façade

Timber cladding "Credo" in combination with white mineral render

Roof

Flat roof

Heating and ventilation

- Gas boiler
- Buffer storage tank
- Solar panels
- Wood burner
- Underfloor heating
- In-wall heating system
- Decentralised Mechanical Ventilation with Heat Recovery

Architecture and special features

- Panoramic windows create uninterrupted sight lines
- Custom home elevator
- Spacious open plan interiors with breathtaking views
- Top-floor home office with house's own gym, wellness area and Baufritz sauna - with sea views, naturally

Standard specification

- Triple-glazed timber and aluminium windows, fitted in the factory without PU foam
- Holistic health concept with outstanding indoor air quality
- Effective Xund-E electrosmog protection and shielded electrical installations
- Superior-quality, environmentally friendly interiors that are healthy to live in thanks to innovative solutions developed in-house by Baufritz (e.g. interior paints, floor adhesives, etc.)
- HOIZ natural, organic insulation made from wood shavings — developed in-house, certified by natureplus and IBN



BAUFRITZ[®]
WIR BAUEN GESUNDHEIT

Floor plans Mehrblick

Ground Floor



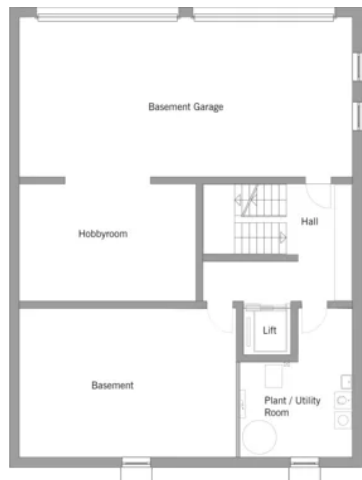
First Floor



Second Floor



Basement



BAUFRITZ[®]
WIR BAUEN GESUNDHEIT

Baufritz (UK) Limited

Camboro Business Park · The Workplace · Oakington Road, Girton · Cambridge CB3 0QH
Telephone +44 (0) 1223 235632 · E-Mail: enquiries@baufritz.co.uk · Web: www.baufritz.co.uk