

Fact sheet

Neumann



House size

Dimensions 12.58 x 8.83 m

Living area first floor 70 m²

Total living area 70 m²

Façade

Timber cladding "Scala" in natural finish

Roof

Flat green roof

Heating and ventilation

- Underfloor heating
- Air source heat pump
- Mechanical Ventilation with Heat Recovery

Architecture and special features

- Contemporary house designed to an individual brief
- Roof soffits finished in larch wood
- Spacious home library with floor-to-ceiling bookcases
- Upper-floor yoga studio
- Deep window seats framing views of lush gardens

Standard specification

- Triple-glazed timber and aluminium windows, fitted in the factory without PU foam
- Holistic health concept with outstanding indoor air quality
- Effective Xund-E electrosmog protection and shielded electrical installations
- Superior-quality, environmentally friendly interiors that are healthy to live in thanks to innovative solutions developed in-house by Baufritz (e.g. interior paints, floor adhesives, etc.)
- HOIZ natural, organic insulation made from wood shavings — developed in-house, certified by natureplus and IBN



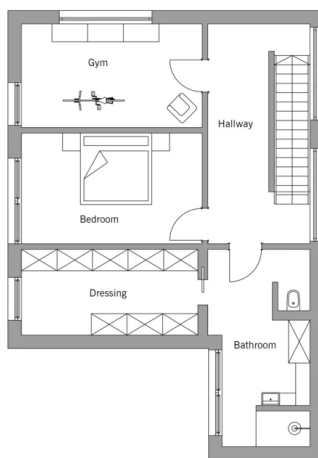
BAUFRITZ[®]
WIR BAUEN GESUNDHEIT

Floor plans Neumann

Ground Floor



First Floor



BAUFRITZ[®]
WIR BAUEN GESUNDHEIT

Baufritz (UK) Limited

Camboro Business Park · The Workplace · Oakington Road, Girton · Cambridge CB3 0QH
Telephone +44 (0) 1223 235632 · E-Mail: enquiries@baufritz.co.uk · Web: www.baufritz.co.uk