

# Fact sheet

## Patel



### House size

Dimensions	19.37 x 17.71 m
Living area ground floor	191 m <sup>2</sup>
Living area first floor	228 m <sup>2</sup>
Living area second floor	88 m <sup>2</sup>
Total living area	507 m <sup>2</sup>

### Façade

Mineral render in ivory

### Roof

Combination of pitch roofs and a flat roof

### Heating and ventilation

- Gas boiler
- Solar panels
- Underfloor heating
- Central ventilation system

### Architecture and special features

- Individually designed family home with park-like garden
- Full height corner windows in master bedroom
- Combination of various pitch roofs and a flat roof
- Fountain in the entrance area
- Bespoke bas-relief sculptures in hallway and gallery

### Standard specification

- Triple-glazed timber and aluminium windows, fitted in the factory without PU foam
- Holistic health concept with outstanding indoor air quality
- Effective Xund-E electrosmog protection and shielded electrical installations
- Superior-quality, environmentally friendly interior furnishings (incl. interior paints, floor adhesives, etc.)
- HOIZ natural, organic insulation made from wood shavings — developed in-house, certified by natureplus and IBN



**BAUFRITZ**<sup>®</sup>  
WIR BAUEN GESUNDHEIT

# Floor plans Patel

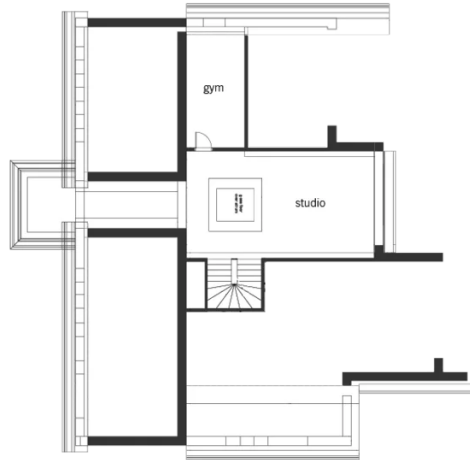
Ground Floor



First Floor



**BAUFRITZ**<sup>®</sup>  
WIR BAUEN GESUNDHEIT



**BAUFRITZ**<sup>®</sup>  
WIR BAUEN GESUNDHEIT

Baufritz (UK) Limited

Camboro Business Park · The Workplace · Oakington Road, Girton · Cambridge CB3 0QH  
Telephone +44 (0) 1223 235632 · E-Mail: [enquiries@baufritz.co.uk](mailto:enquiries@baufritz.co.uk) · Web: [www.baufritz.co.uk](http://www.baufritz.co.uk)