

Fact sheet

Richter



House size

Dimensions	9.40 x 13.16 m
Living area basement	121 m ²
Living area ground floor	103 m ²
Living area second floor	102 m ²
Total living area	326 m ²

Façade

Sheet metal in combination with vertical timber cladding and mineral render

Roof

Assymetrical pitched roof

Heating and ventilation

- Gas boiler
- Solar panels
- Underfloor heating
- Central ventilation system

Architecture and special features

- Modern but timeless architecture
- Exclusive combination of natural materials
- Interior design by Carolin Stephan (winner of "Best of Interior" Award 2018)
- Loggia
- Additional living, working & fitness areas in basement

Standard specification

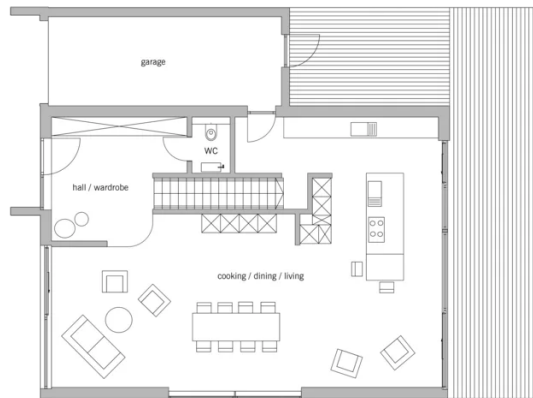
- Triple-glazed timber and aluminium windows, fitted in the factory without PU foam
- Holistic health concept with outstanding indoor air quality
- Effective Xund-E electrosmog protection and shielded electrical installations
- Superior-quality, environmentally friendly interior furnishings (incl. interior paints, floor adhesives, etc.)
- HOIZ natural, organic insulation made from wood shavings — developed in-house, certified by natureplus and IBN



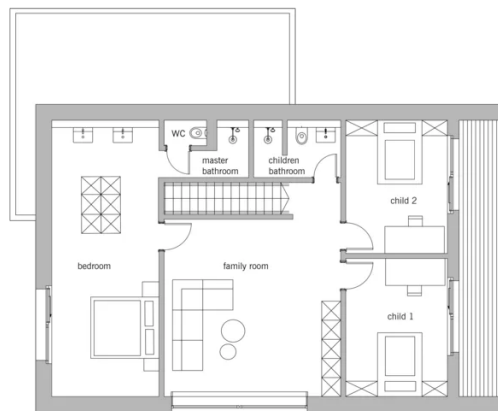
BAUFRITZ[®]
WIR BAUEN GESUNDHEIT

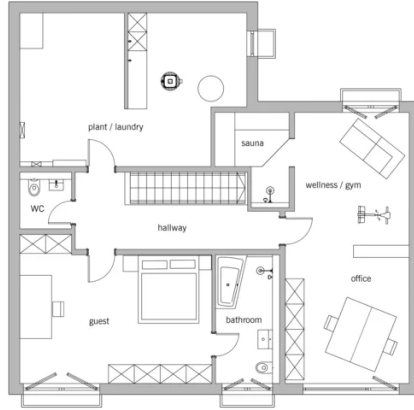
Floor plans Richter

Ground Floor



First Floor





BAUFRITZ[®]
WIR BAUEN GESUNDHEIT

Baufritz (UK) Limited

Camboro Business Park · The Workplace · Oakington Road, Girton · Cambridge CB3 0QH
Telephone +44 (0) 1223 235632 · E-Mail: enquiries@baufritz.co.uk · Web: www.baufritz.co.uk