

# Fact sheet

## Schauer



### House size

Dimensions	14. x 10.0 m
Living area basement	90 m <sup>2</sup>
Living area ground floor	101 m <sup>2</sup>
Living area second floor	94 m <sup>2</sup>
Total living area	285 m <sup>2</sup>

### Façade

Timber cladding "Rondo"

### Roof

Pitched roof

### Heating and ventilation

- Ground source heat pump

### Architecture and special features

- Individually designed Chalet style home
- Master bedroom with a convenient dressing room and large wellness bathroom
- Wooden winder staircase
- Fireplace dividing the downstairs space into two open areas
- Generous terrace and upper floor balcony with stunning views

### Standard specification

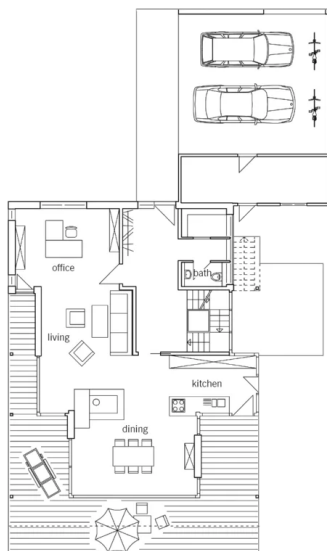
- Triple-glazed timber and aluminium windows, fitted in the factory without PU foam
- Holistic health concept with outstanding indoor air quality
- Effective Xund-E electrosmog protection and shielded electrical installations
- Superior-quality, environmentally friendly interiors that are healthy to live in thanks to innovative solutions developed in-house by Baufritz (e.g. interior paints, floor adhesives, etc.)
- HOIZ natural, organic insulation made from wood shavings — developed in-house, certified by natureplus and IBN



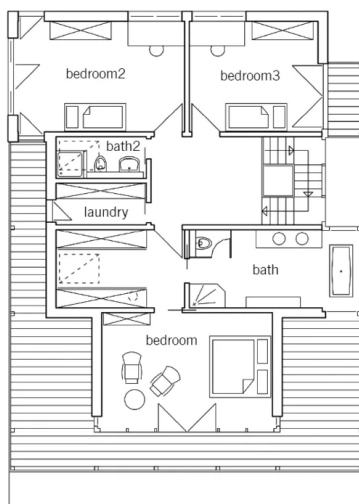
**BAUFRITZ**<sup>®</sup>  
WIR BAUEN GESUNDHEIT

# Floor plans Schauer

Ground Floor



First Floor



**BAUFRITZ**<sup>®</sup>  
WIR BAUEN GESUNDHEIT

Baufritz (UK) Limited

Camboro Business Park · The Workplace · Oakington Road, Girton · Cambridge CB3 0QH  
Telephone +44 (0) 1223 235632 · E-Mail: enquiries@baufritz.co.uk · Web: www.baufritz.co.uk