

Fact sheet

Show house Freiraum



House size

Dimensions	13.95 x 7.58 m
Living area ground floor	118 m ²
Total living area	118 m ²

Façade

- Rough sawn spruce cladding "Scala"
- Soffit: silver fir
- Façade: grey (treated)
- Soffit: natural finish

Roof

- Bungalow: pitched roof
- Extension: flat roof
- Titanium zinc roof

Heating and ventilation

- Underfloor heating
- Ground source heat pump borehole
- Heating system with built-in cooling function
- Photovoltaic system (7,92 kWp)
- Mechanical Ventilation with Heat Recovery
- KNX Smart IQ Standard

Architecture and special features

- Barrier-free bungalow for two
- Light and airy interiors with large expanses of glass
- Downpipes integrated into façade and box gutters
- Sheltered porch with secure outdoor parcel delivery box
- Access to the garden via sheltered gallery
- Continued roof and external wall lines form an exclusive covered outdoor terrace
- Direct, floor-level access to terrace from living space
- Spacious bedroom with Baufritz sauna
- Possibility to convert home office into an en-suite bedroom for a live-in caregiver

Standard specification

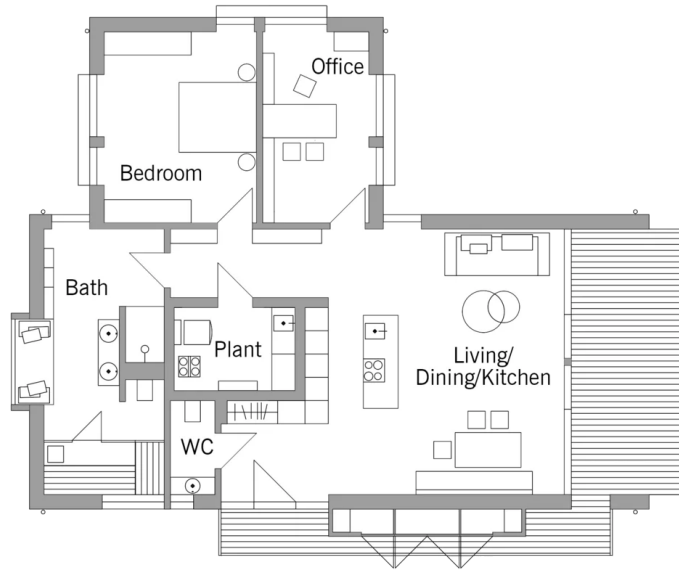
- Triple-glazed timber and aluminium windows, fitted in the factory without PU foam
- Holistic health concept with outstanding indoor air quality
- Effective Xund-E electrosmog protection and shielded electrical installations
- Superior-quality, environmentally friendly interior furnishings (incl. interior paints, floor adhesives, etc.)
- HOIZ natural, organic insulation made from wood shavings — developed in-house, certified by natureplus and IBN



BAUFRITZ[®]
WIR BAUEN GESUNDHEIT

Floor plans Show house Freiraum

Ground Floor



BAUFRITZ[®]
WIR BAUEN GESUNDHEIT

Baufritz (UK) Limited

Camboro Business Park · The Workplace · Oakington Road, Girton · Cambridge CB3 0QH
Telephone +44 (0) 1223 235632 · E-Mail: enquiries@baufritz.co.uk · Web: www.baufritz.co.uk