

# Fact sheet

## Show house Lichtblick



### House size

Dimensions	15.07 x 5.70 m
Living area basement	43 m <sup>2</sup>
Living area ground floor	63 m <sup>2</sup>
Living area first floor	64 m <sup>2</sup>
Total living area	170 m <sup>2</sup>

### Façade

- Rough sawn untreated spruce cladding "Credo"
- Fir wood decorative inserts in natural finish between windows
- Vertical narrow slim-line timber slats on loggia
- Vertical narrow counter battens on add-on annex

### Roof

- Tiled pitched roof
- "Creton Futura" in matte black

### Heating and ventilation

- Air source heat pump
- Underfloor heating
- Mechanical Ventilation with Heat Recovery
- Photovoltaic system (6.62 kWp) with additional battery storage (16kWh capacity)

### Architecture and special features

- Modern compact design (ideal for irregular, snug plots)
- Set-back entrance module adds character and provides shelter from elements
- Extravagant comfortable loggia creates additional private space
- Skilfully positioned windows flood interiors with natural light
- Discrete access to basement stairs from kitchen
- Home office in first floor hallway
- Private spa with sauna, shower and relaxation area
- Single storey add-on annex

### Standard specification

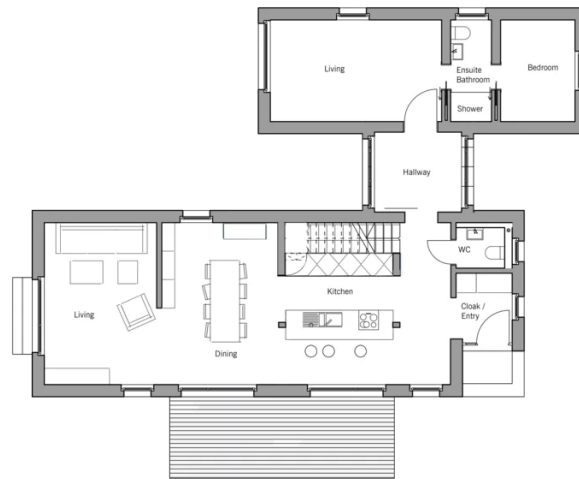
- Triple-glazed timber and aluminium windows, fitted in the factory without PU foam
- Holistic health concept with outstanding indoor air quality
- Effective Xund-E electrosmog protection and shielded electrical installations
- Superior-quality, environmentally friendly interior furnishings (incl. interior paints, floor adhesives, etc.)
- HOIZ natural, organic insulation made from wood shavings — developed in-house, certified by natureplus and IBN



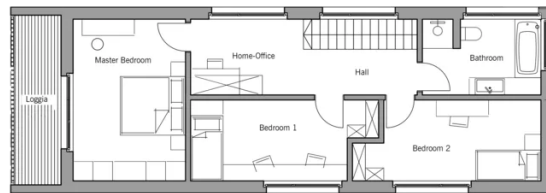
**BAUFRITZ**<sup>®</sup>  
WIR BAUEN GESUNDHEIT

Floor plans Show house Lichtblick

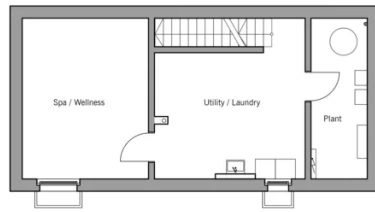
Ground Floor



First Floor



**BAUFRITZ**<sup>®</sup>  
WIR BAUEN GESUNDHEIT



**BAUFRITZ**<sup>®</sup>  
WIR BAUEN GESUNDHEIT

Baufritz (UK) Limited

Camboro Business Park · The Workplace · Oakington Road, Girton · Cambridge CB3 0QH  
Telephone +44 (0) 1223 235632 · E-Mail: [enquiries@baufritz.co.uk](mailto:enquiries@baufritz.co.uk) · Web: [www.baufritz.co.uk](http://www.baufritz.co.uk)