

Fact sheet

Skyhouse



House size

Dimensions	28.65 x 6.33 m
Living area ground floor	144 m ²
Living area second floor	146 m ²
Total living area	290 m ²

Façade

Timber cladding "Credo" in combination with mineral render

Roof

Mono pitch roof

Heating and ventilation

- Wood pellet biomass boiler
- Solar panels
- Mechanical Ventilation with Heat Recovery

Architecture and special features

- Large mono pitch roof blends with the landscape
- Extensively glazed façade
- Private pond and solar panel field in park-like garden
- Walk-in raindance shower
- Premium dark tiles in bathroom

Standard specification

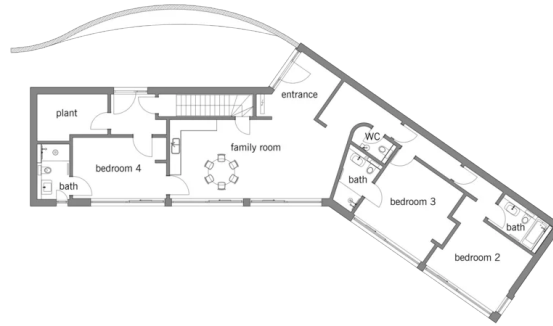
- Triple-glazed timber and aluminium windows, fitted in the factory without PU foam
- Holistic health concept with outstanding indoor air quality
- Effective Xund-E electrosmog protection and shielded electrical installations
- Superior-quality, environmentally friendly interiors that are healthy to live in thanks to innovative solutions developed in-house by Baufritz (e.g. interior paints, floor adhesives, etc.)
- HOIZ natural, organic insulation made from wood shavings — developed in-house, certified by natureplus and IBN



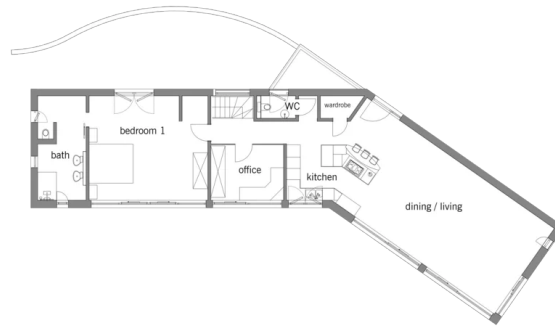
BAUFRITZ[®]
WIR BAUEN GESUNDHEIT

Floor plans Skyhouse

Ground Floor



First Floor



BAUFRITZ[®]
WIR BAUEN GESUNDHEIT

Baufritz (UK) Limited

Camboro Business Park · The Workplace · Oakington Road, Girton · Cambridge CB3 0QH
Telephone +44 (0) 1223 235632 · E-Mail: enquiries@baufritz.co.uk · Web: www.baufritz.co.uk