

Fact sheet

Tawse



House size

Dimensions	10.08 x 16.33 m
Living area ground floor	139 m ²
Living area second floor	126 m ²
Total living area	265 m ²

Façade

Mineral render

Roof

Butterfly roof, Flat roof

Heating and ventilation

- Underfloor heating
- Gas boiler
- Mechanical ventilation with heat exchange

Architecture and special features

- House built on a steel platform supported by stilts
- Riverside location in a flood zone
- Contemporary design with white mineral render façade
- Windows of varying sizes allow light into the house
- Brises soleil and external shading over the south-facing windows
- Contemporary interiors in beautiful, high-quality materials

Standard specification

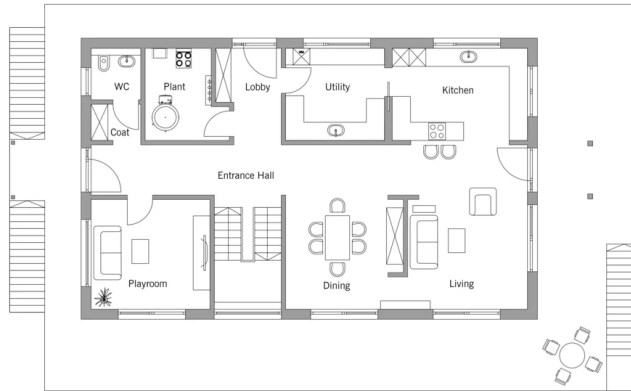
- Triple-glazed timber and aluminium windows, fitted in the factory without PU foam
- Holistic health concept with outstanding indoor air quality
- Effective Xund-E electrosmog protection and shielded electrical installations
- Superior-quality, environmentally friendly interior furnishings (incl. interior paints, floor adhesives, etc.)
- HOIZ natural, organic insulation made from wood shavings — developed in-house, certified by natureplus and IBN



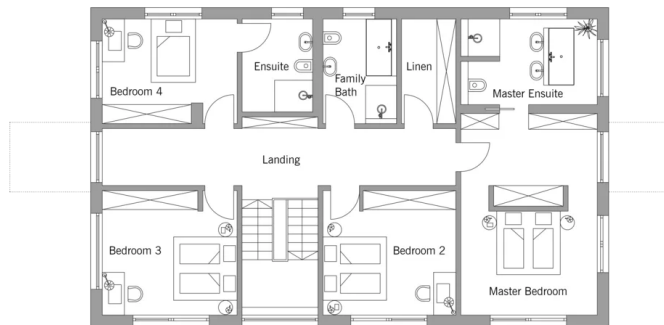
BAUFRITZ[®]
WIR BAUEN GESUNDHEIT

Floor plans Tawse

Ground Floor



First Floor



BAUFRITZ[®]
WIR BAUEN GESUNDHEIT

Baufritz (UK) Limited

Camboro Business Park · The Workplace · Oakington Road, Girton · Cambridge CB3 0QH
Telephone +44 (0) 1223 235632 · E-Mail: enquiries@baufritz.co.uk · Web: www.baufritz.co.uk