

Fact sheet

Treehouse



House size

Dimensions	18.20 x 8.20 m
Living area ground floor	108 m ²
Living area second floor	92 m ²
Total living area	200 m ²

Façade

Timber cladding "Rondo" in natural finish

Roof

Flat roof

Heating and ventilation

- Gas boiler, photovoltaic panels
- Underfloor heating, wood burner
- Mechanical Ventilation with Heat Recovery

Architecture and special features

- Timber cladding with strong horizontal striations make façade appear brick-like
- First floor oriel window
- Large sliding glass doors on ground floor
- Picture window with garden view

Standard specification

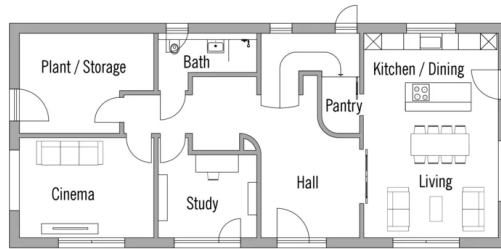
- Triple-glazed timber and aluminium windows, fitted in the factory without PU foam
- Holistic health concept with outstanding indoor air quality
- Effective Xund-E electrosmog protection and shielded electrical installations
- Superior-quality, environmentally friendly interior furnishings (incl. interior paints, floor adhesives, etc.)
- HOIZ natural, organic insulation made from wood shavings — developed in-house, certified by natureplus and IBN



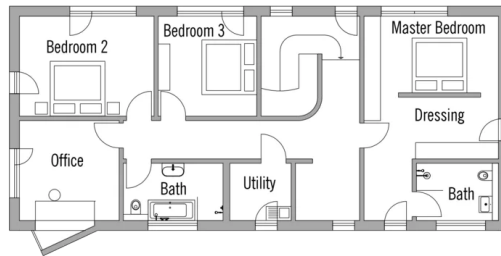
BAUFRITZ[®]
WIR BAUEN GESUNDHEIT

Floor plans Treehouse

Ground Floor



First Floor



BAUFRITZ[®]
WIR BAUEN GESUNDHEIT

Baufritz (UK) Limited

Camboro Business Park · The Workplace · Oakington Road, Girton · Cambridge CB3 0QH
Telephone +44 (0) 1223 235632 · E-Mail: enquiries@baufritz.co.uk · Web: www.baufritz.co.uk