

# Fact sheet

## Weald House



### House size

Dimensions	17.58 x 15.7 m
Living area ground floor	175 m <sup>2</sup>
Living area first floor	144 m <sup>2</sup>
Living area second floor	25 m <sup>2</sup>
Total living area	344 m <sup>2</sup>

### Façade

Timber cladding "Rondo" in combination with white mineral render and façade panels

### Roof

Flat roof

### Heating and ventilation

- Gas heating
- Solar panels, photovoltaic panels
- Underfloor heating
- Mechanical Ventilation with Heat Recovery

### Architecture and special features

- Generous detached family home with three different kinds of façade
- Set-back penthouse on flat roof
- Skilfully positioned private terrace
- Large sliding glass doors
- Waterfall staircase

### Standard specification

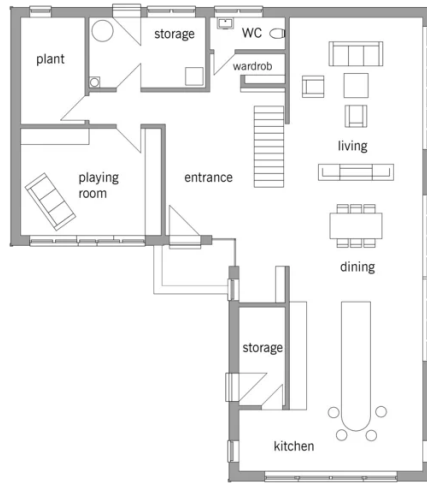
- Triple-glazed timber and aluminium windows, fitted in the factory without PU foam
- Holistic health concept with outstanding indoor air quality
- Effective Xund-E electrosmog protection and shielded electrical installations
- Superior-quality, environmentally friendly interiors that are healthy to live in thanks to innovative solutions developed in-house by Baufritz (e.g. interior paints, floor adhesives, etc.)
- HOIZ natural, organic insulation made from wood shavings — developed in-house, certified by natureplus and IBN



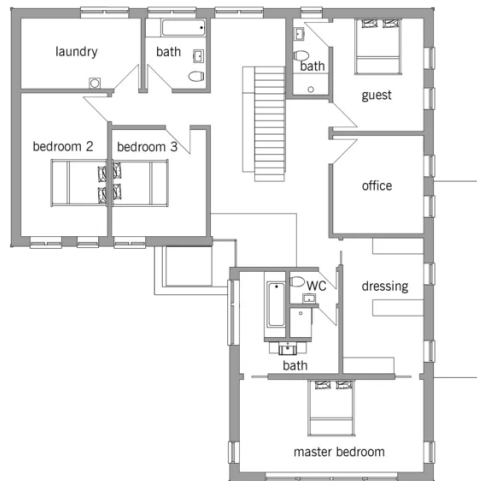
**BAUFRITZ**<sup>®</sup>  
WIR BAUEN GESUNDHEIT

# Floor plans Weald House

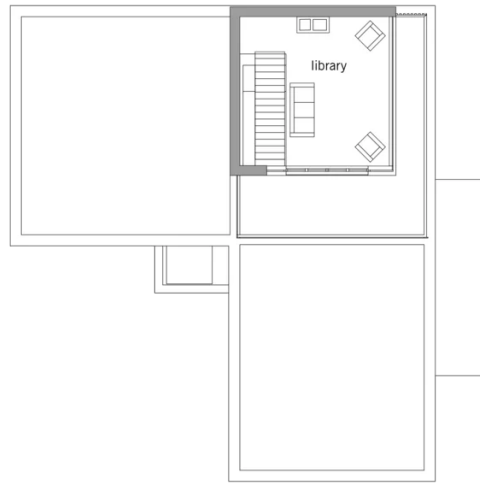
Ground Floor



First Floor



**BAUFRITZ**<sup>®</sup>  
WIR BAUEN GESUNDHEIT



**BAUFRITZ**<sup>®</sup>  
WIR BAUEN GESUNDHEIT

Baufritz (UK) Limited

Camboro Business Park · The Workplace · Oakington Road, Girton · Cambridge CB3 0QH  
Telephone +44 (0) 1223 235632 · E-Mail: [enquiries@baufritz.co.uk](mailto:enquiries@baufritz.co.uk) · Web: [www.baufritz.co.uk](http://www.baufritz.co.uk)